

# European Platform of Women Scientists



---

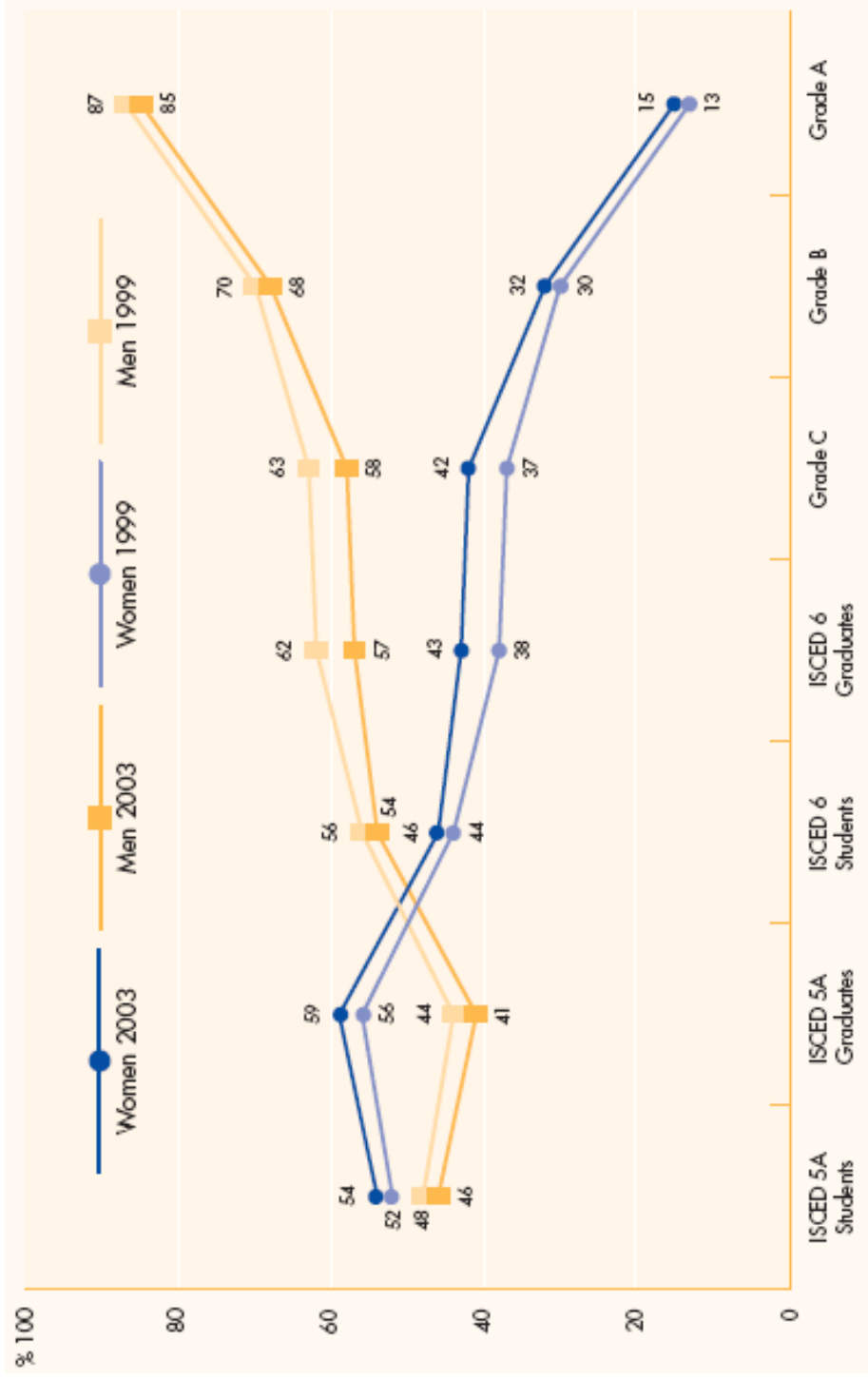
European Platform of Women Scientists

**Dr. Marianne Schwarz da Silva**

*London, September 6th, 2007*  
**Equalitec Conference**

# Gender Gap in Science

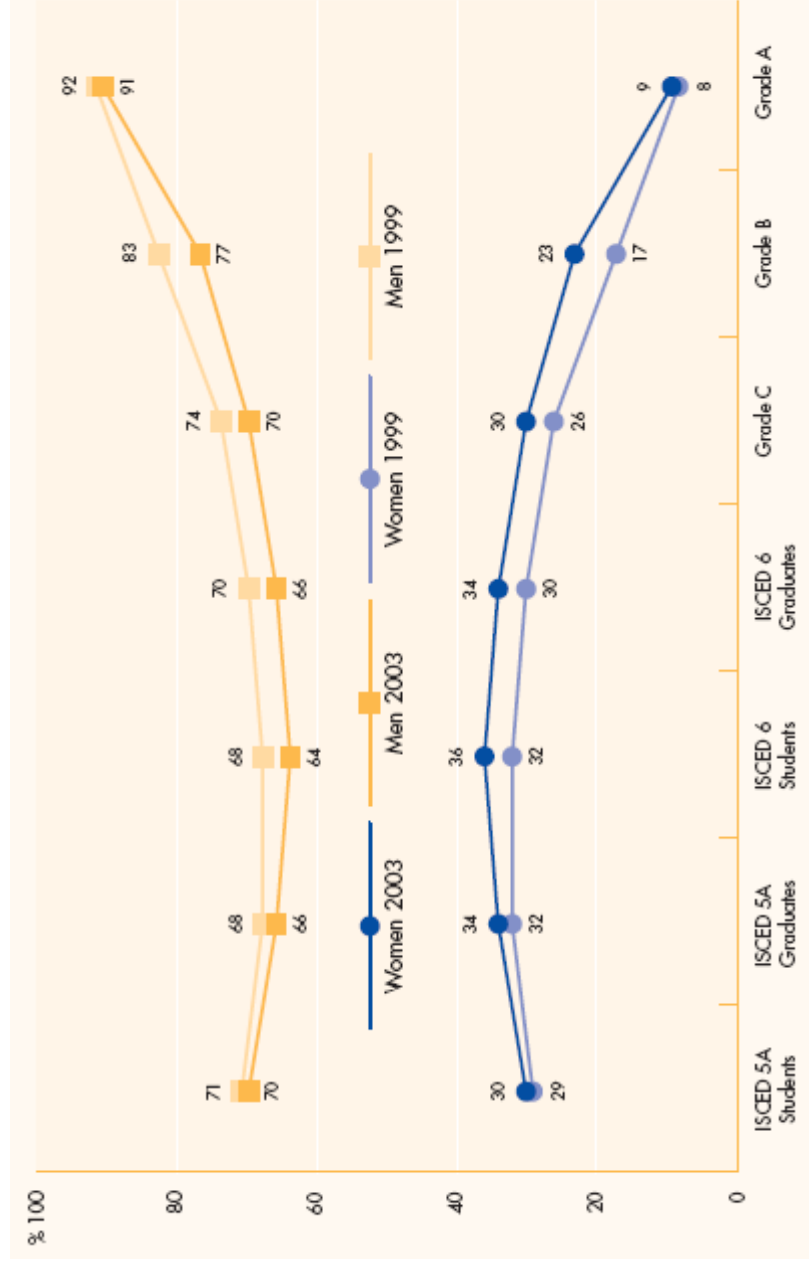
Proportion of women and men in a typical academic career, students and academic staff, EU25, 1999-2003



Source: European Commission, *She Figures 2006*, p. 55

# Gender Gap in Science (II)

*Proportion of women and men in a typical academic career, in science and engineering students and academic staff, EU25, 1999-2003*



Source: European Commission, *She Figures 2006*, p. 55

# Under-representation of Women Scientists: *She Figures 2006*



- Major gap between the number of female graduates, the number of female researchers and the number of women scientists in senior positions
- Differences between countries: Romania fares best, but 14 out of 27 countries employ less senior female staff than the EU average of 15.3% (Grade A)
- Differences between disciplines: Humanities and social sciences display greater numbers of female researchers

# Why are women under-represented? (I)



## 3 Determining Phases :

- Education (images, role models)
- Training (critical PhD step)
- Career (retention, glass ceiling)

# Why are women under-represented? (II)



Major factors can be linked to

- Difficulties to reconcile family and work
- Impact and conditions of peer-review/ measurement of excellence
- Gate-keeping (power)
- Networking (lack of)
- Cultural stereotypes

## Lisbon Agenda

- “Make Europe, by 2010, the most competitive and the most dynamic knowledge-based economy in the world”  
**3% GDP (2% Private/1% Public)**
- Need for 700,000 more researchers to achieve this
- → **Untapped potential of women researchers**

## EPWS history in short



- November 2005: EPWS was legally established in Brussels as an international non-profit association under Belgian law (AISBL)
- February to April 2006: EPWS Secretariat took up work
- March 28<sup>th</sup>, 2006: official Launch Event for the Brussels community
- October 20<sup>th</sup>, 2006: first Network Event in Brussels – more than 80 networks from 28 countries represented
- April 27-28<sup>th</sup> 2007: EPWS first General Assembly

## EPWS' Aims

- Network existing networks of women scientists and networks engaged in promoting women scientists in **all** disciplines
- Promote networking among women scientists, particularly in Central and Eastern Europe and the private sector
- Promote the understanding and the inclusion of the gender issue in science and research policy in all scientific fields
- Ensure that women scientists' interests are taken into consideration when setting the political research agenda

## EPWS' Main Goals

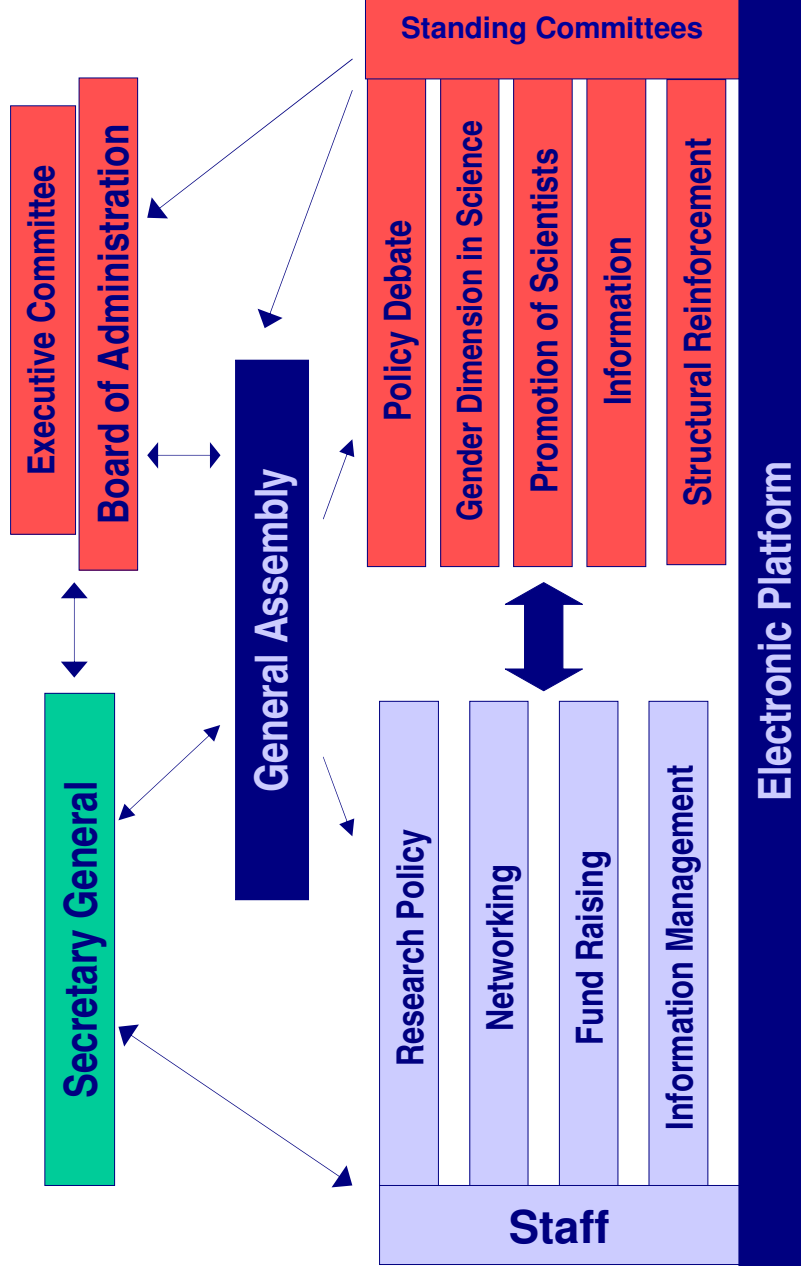
- Increased participation of women scientists in European research policy and the shaping of the EU research agenda
- Enhanced participation of women in science and its decision-making bodies as well as in national and European research programmes, especially in FP7
- Better understanding and integration of the gender dimension in science

# EPWS Structure



## Secretariat

## Association



## EPWS current main activities



- Networking/Membership outreach
- Research policy and interest representation (monitoring policy, position papers, consultations)
- Information (newsletter, website, press releases, articles)
- Public and Private Partnerships

# EPWS Network Outreach



- **Basis:** 2003 EU Commission Directory of Networks of Women Scientists (83 Networks/Associations)
- **Means:** Mini-Survey (April 2006), Network Questionnaire (June 2006)
- **Results:** EPWS has been in touch with over 140 Networks from 30 different countries (April 2007)

⇒ **Membership Outreach**



## Types of Membership

- Full
- Associate
- Supporting
- Individual

⇒ Total of **107 Members** (April 2007)

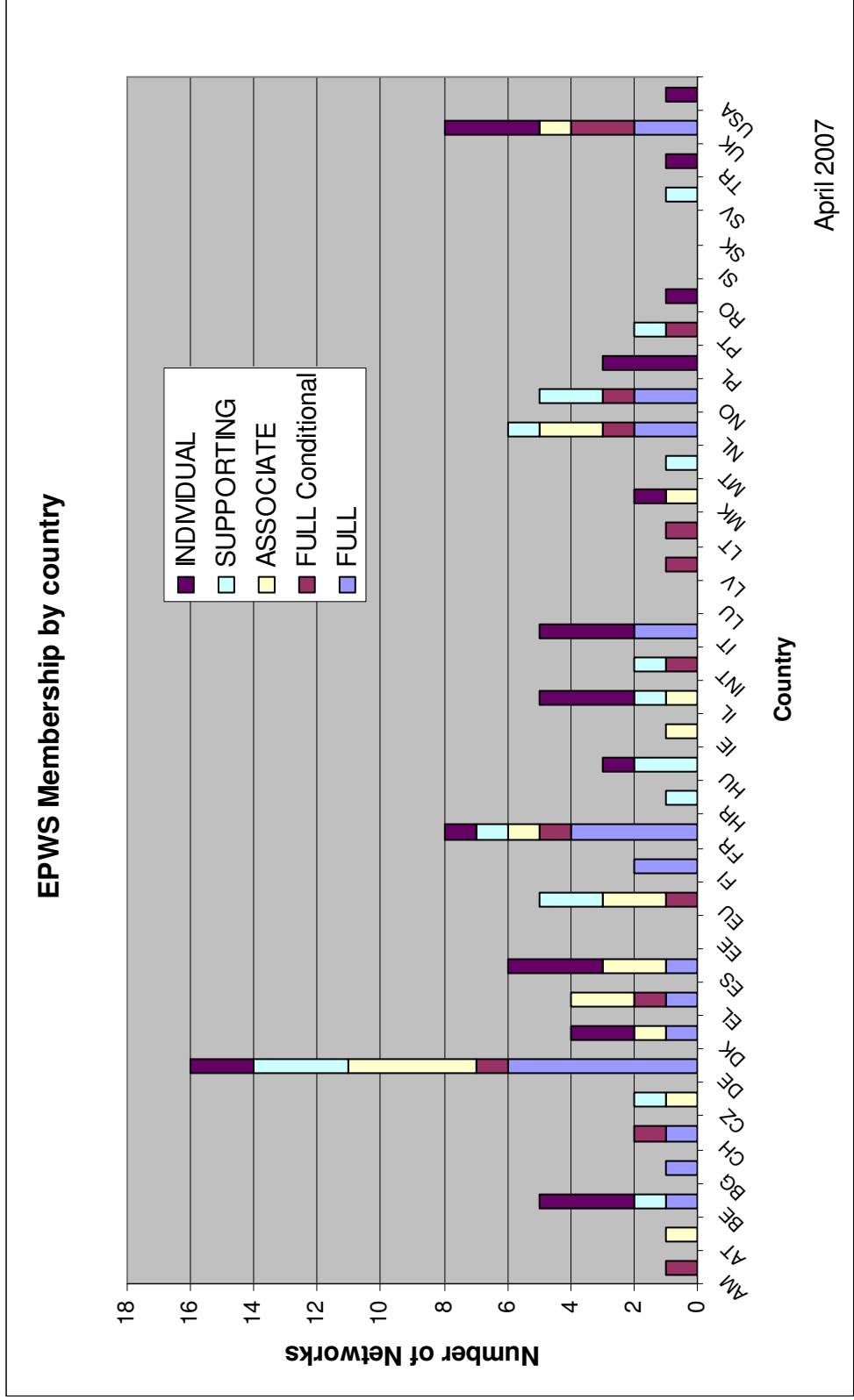
*No membership fees for 2007*

## Services to members

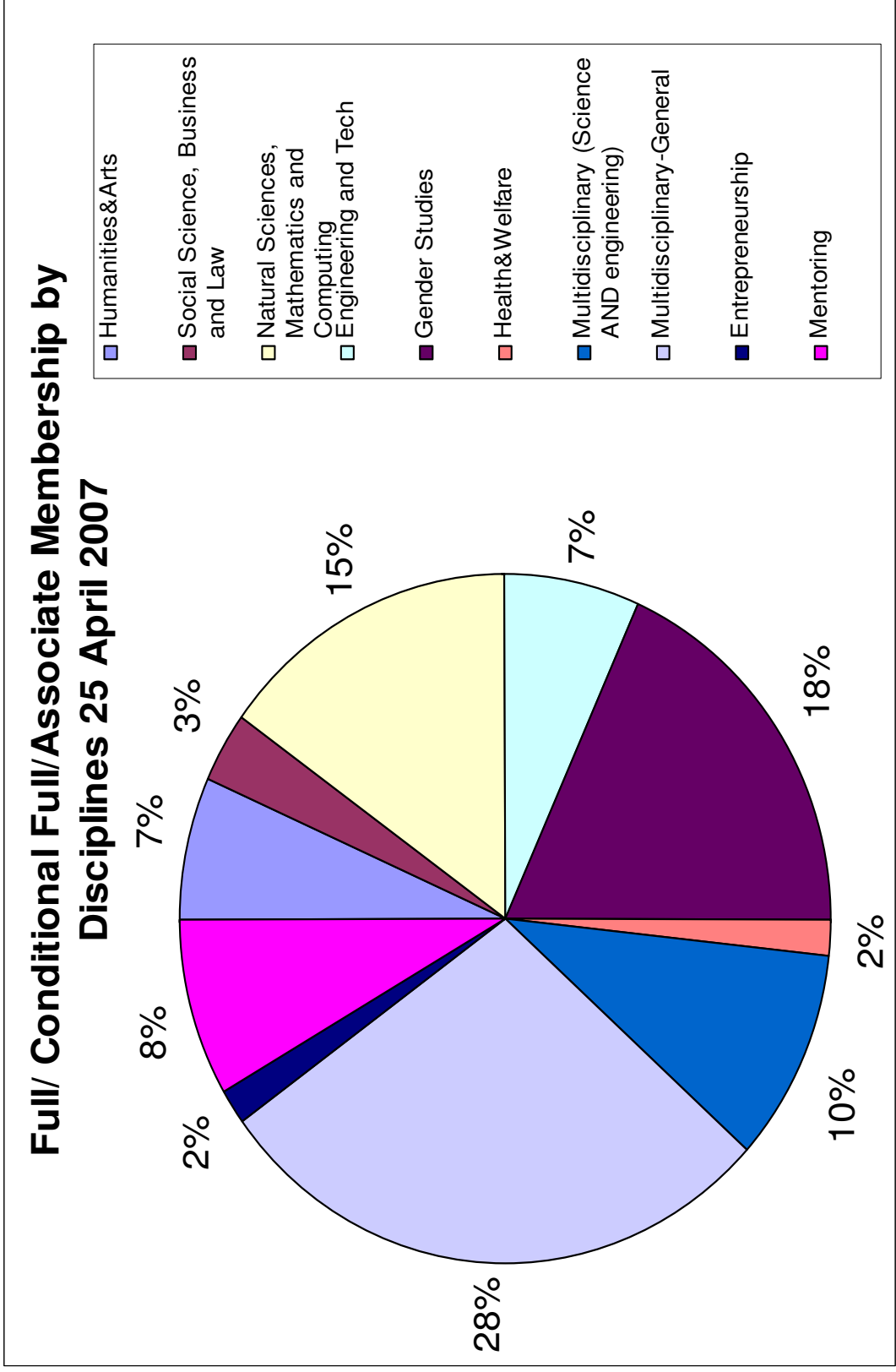


- Know-how and updated information on EU affairs
- Visibility at European level and networking opportunities
- Advise in creation and management of networks
- Support in projects (administrative/logistics)

# Membership by Country



# Membership by Disciplines



## **Involvement in Research Policy**

- **Focus: FP7, Lisbon Agenda, excellence and innovation, ERC, EIT, ERA**
- **Position Papers and Inputs to public consultations**
- **Inputs on Draft Work Programmes 2007-2013**

# Information and Public Relations



- Monthly newsletter (over 1200 subscribers)
  - Newsalerts
- Regularly updated website
  - Public area
  - Members' area
    - Calls for proposals, search for partners, specific information about networks
- Media contacts

⇒ ***Awareness raising of women's participation and contribution to science***

## Public and Private Partnerships

- Development of basic funding concept
- Survey of potentially interesting funding institutions and companies
- Exploration of possibilities for Partnerships
  - Institute a mix of resources to ensure sustainability, credibility and independence
  - Organise conferences and workshops with members and other interested institutions

# Contacts:

**European Platform of Women Scientists AISBL**

Rue d'Arlon

B-1000 Brussels

Tel: +32 2 234 37 50, Fax: +32 2 234 37 59



[www.epws.org](http://www.epws.org)

[info@epws.org](mailto:info@epws.org)

[Membership@epws.org](mailto:Membership@epws.org)